



GEARHEADS(POWERFUL TYPE) Frame size 90mm sq. (3.54 in.sq.)

BALL BEARING TYPE

RATED TORQUE OF GEARHEAD

| MODEL | Speed(rpm) | 500 | 300 | 200 | 120 | 100 | 60 | 50 | 30 | 20 | 15 | 10 | 9 | 6 | 5 | 3 | 2 | 1 |
|------------------------|------------|------|------|------|------|------|-------|-------|-------|-------|-------|-------|-------|-------|-------|-------|-------|-------|
| | Ratio | 50Hz | 3 | 5 | 7.5 | 12.5 | 15 | 25 | 30 | 50 | 75 | 100 | 150 | 166.7 | 250 | 300 | 500 | 750 |
| | 60Hz | 3.6 | 6 | 9 | 15 | 18 | 30 | 36 | 60 | 90 | 120 | 180 | 200 | 300 | 360 | 600 | 900 | 1800 |
| L9VK□B | kg-cm | 16.5 | 27.5 | 41.3 | 62.1 | 74.5 | 112.2 | 134.6 | 200 | 200 | 200 | 200 | 200 | 200 | 200 | 200 | 200 | 200 |
| L9WK□B | N-m | 1.62 | 2.70 | 4.05 | 6.08 | 7.30 | 11.00 | 13.19 | 19.60 | 19.60 | 19.60 | 19.60 | 19.60 | 19.60 | 19.60 | 19.60 | 19.60 | 19.60 |
| L9V10D(DECIMAL) | oz-in | 229 | 382 | 574 | 862 | 1034 | 1558 | 1870 | 2777 | 2777 | 2777 | 2777 | 2777 | 2777 | 2777 | 2777 | 2777 | 2777 |

With Decimal Gearhead

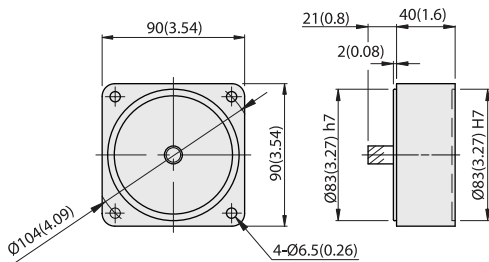
- * The normal torque is that the motor and gearhead are directly coupled.
- * Insert the denominator of reduction ratio in □ of gearhead model name.
- * Actual rotation speed is 2~15% less than synchronous speed.
- * ■ Color indicates that the rotation of gearhead shaft is in opposite direction as output shaft of motor.

DIMENSIONS

Unit : mm(inch)

DECIMAL GEARHEAD

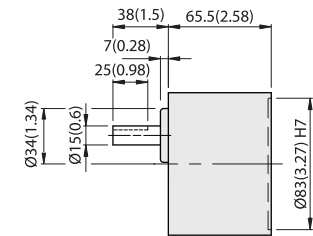
L9V10D



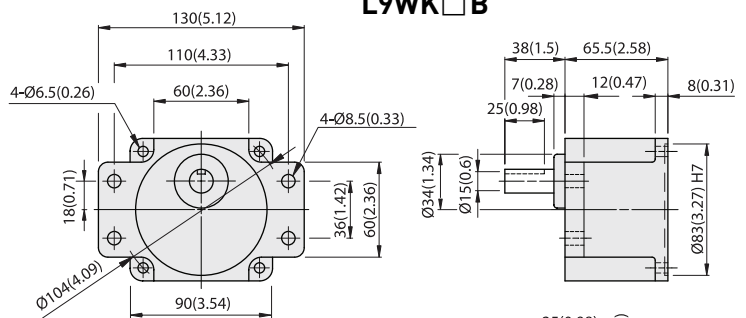
WEIGHT 0.6kg (1.3 lb)

GEARHEAD

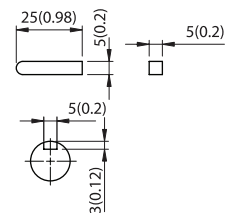
L9VK□B



L9WK□B

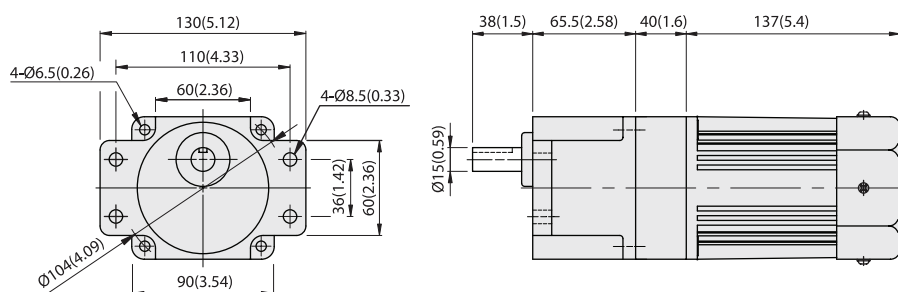


| MODEL | GEAR RATIO | WEIGHT | | BOLT |
|--------|------------|--------|-----|--------|
| | | kg | lb | |
| L9VK□B | 1/3~1/200 | 1.5 | 3.3 | M6x95 |
| L9WK□B | 1/3~1/200 | 1.6 | 3.5 | M6xL25 |



KEY SIZE

L9WK□B + L9V10D + L9I90P□H



INDUCTION MOTORS



GEARHEADS(ULTRA POWERFUL TYPE) Frame size 90mm sq. (3.54 in.sq.)

BALL BEARING TYPE

▶ **RATED TORQUE OF GEARHEAD**

| MODEL | Speed(rpm) | 500 | 300 | 200 | 120 | 100 | 60 | 50 | 30 | 20 | 15 | 10 | 9 | 6 | 5 | 3 | 2 | 1 | |
|---|------------|------|------|------|------|------|-------|-------|-------|-------|-------|-------|-------|-------|-------|-------|-------|-------|------|
| | Ratio | 50Hz | 3 | 5 | 7.5 | 12.5 | 15 | 25 | 30 | 50 | 75 | 100 | 150 | 166.7 | 250 | 300 | 500 | 750 | 1500 |
| | | 60Hz | 3.6 | 6 | 9 | 15 | 18 | 30 | 36 | 60 | 90 | 120 | 180 | 200 | 300 | 360 | 600 | 900 | 1800 |
| L9UK□B L9V10D(DECIMAL) | kg-cm | 16.5 | 27.5 | 41.3 | 62.1 | 74.5 | 112.2 | 134.6 | 224.4 | 300 | 300 | 300 | 300 | 300 | 300 | 300 | 300 | 300 | |
| | N-m | 1.62 | 2.70 | 4.05 | 6.08 | 7.30 | 11.00 | 13.19 | 21.99 | 29.40 | 29.40 | 29.40 | 29.40 | 29.40 | 29.40 | 29.40 | 29.40 | 29.40 | |
| | oz-in | 229 | 382 | 574 | 862 | 1034 | 1558 | 1870 | 3116 | 4166 | 4166 | 4166 | 4166 | 4166 | 4166 | 4166 | 4166 | 4166 | |

With Decimal Gearhead

- * The normal torque is that the motor and gearhead are directly coupled.
- * Insert the denominator of reduction ratio in □ of gearhead model name.
- * Actual rotation speed is 2~15% less than synchronous speed.
- * ■Color indicates that the rotation of gearhead shaft is in opposite direction as output shaft of motor.

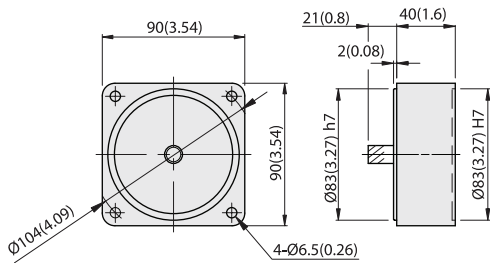
INDUCTION MOTORS

DIMENSIONS

Unit : mm(inch)

DECIMAL GEARHEAD

L9V10D

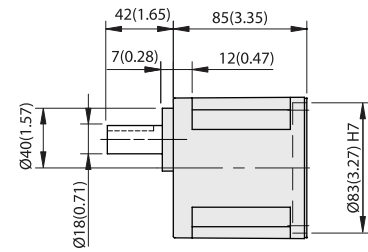


WEIGHT 0.6kg (1.3 lb)

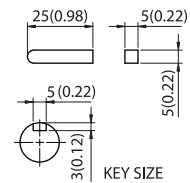


GEARHEAD

L9UK□B



| MODEL | GEAR RATIO | WEIGHT | | BOLT |
|--------|------------|--------|-----|--------|
| | | kg | lb | |
| L9UK□B | 1/3~1/200 | 1.95 | 4.3 | M6xL20 |



KEY SIZE



L9UK□B + L9190P□H

